

Monitoring & Control The Family

We live in a world where literally anything we want to know can be conjured up with a click of a mouse or a tick on a touch panel. With WhisperCare, we offer all relevant system information the professional or recreational user would like to have.



This is either through our 5,7 and 10 inch WhisperTouch panels, a local control already in place or via the cloud, connecting to computer, tablet or cell phone. Our new OctoControl communication centre connects the WhisperPower products with the WhisperTouch panel and/ or (both is possible) to a third party screen. Read more about these devices on the next pages.

Monitoring & Control WhisperCare 1.5

Go to Page 124



1.5



Monitoring & Control WhisperCare 2.0

Go to Page 128



2.0



Battery Monitor BMSS PRO

Go to Page 132



Smart Battery Monitor WBM Series

Go to Page 134



Battery Status Interface WPC-BSI-500

Go to Page 136



Isolated Communication Module WPC-RS232-i

Go to Page 138



WhisperCare 1.5

Remote monitoring, control and power management

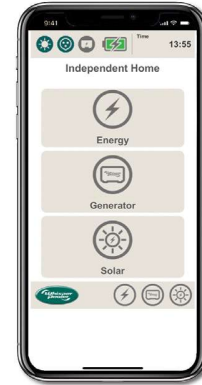
In 2016, WhisperCare 1.5 was added as an important additional feature to WhisperPower systems as a key source to obtain remote system data.

Remote read-out and control is essential to efficiently operate and support one or more systems. A good example are the mobile units of the NHS (National Health Service, United Kingdom), used for mammographic scanning, powered by WhisperPower OctoPower systems equipped with WhisperCare 1.5. WhisperPower's fleet manager, vehicle supplier and service department are directly connected to the systems by WhisperCare. Over 50 trailers are now operational using WhisperPower systems with WhisperCare 1.5.

From the panel, the WhisperPower Generator, the Sine Wave Inverter / Charger combination and the batteries can all be monitored and operated. If there is already a central panel installed, for example for the navigation, we also offer the possibility of using the existing panel to monitor the WhisperPower system via an interface.

Battery Monitoring

- Battery voltage (V) and current consumption in Amps
- Activated charge current (charger, alternator, solar panels)
- "Time remaining" indication showing the time the battery can be utilized
- Ampere consumption (Ah)
- WhisperPower Generator start battery voltage indication



Main Menu

- Choose from ENERGY, GENERATOR and SETTINGS
- The WPC's and AC / DC PowerCubes most important settings can be programmed using the WhisperTouch panel

WhisperTouch: Three sizes available

The WhisperTouch panel is available in 5, 7 and 10 inches. This high resolution, full colour panel comes complete with cables and connectors for connection to the inverters / battery chargers and if also installed, the WhisperPower generator.

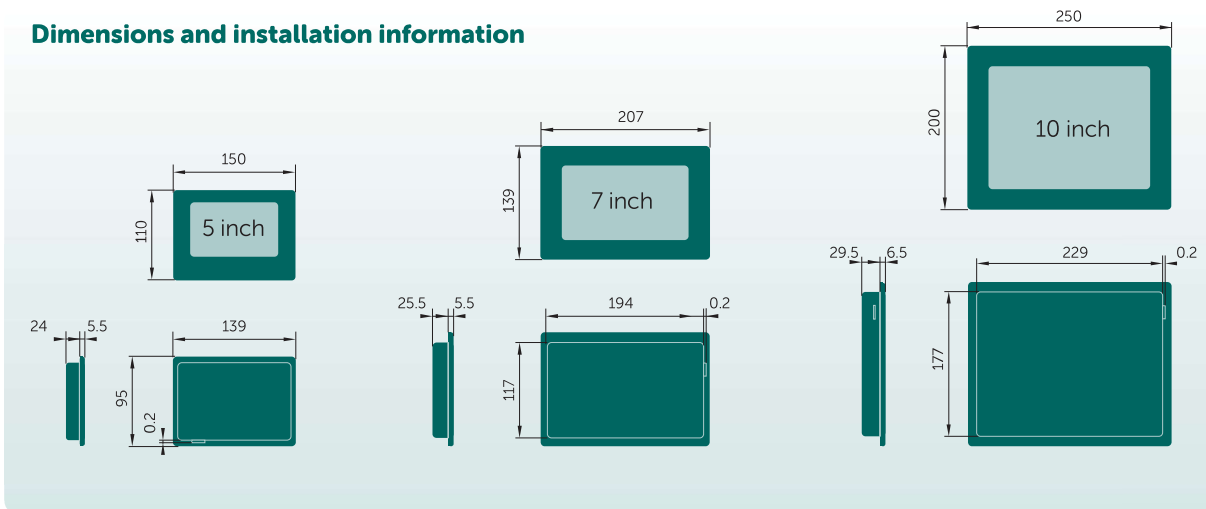


WhisperTouch Series

	5 INCH	7 INCH	10 INCH
Article Number	40280105 (generator-only use)	40280101	40280102
TECHNICAL SPECIFICATIONS			
Input voltage	6 - 42 VDC	6 - 42 VDC	15 - 36 VDC
Power consumption	100 - 240 mA	150 - 750 mA	100 - 650 mA
Dimensions *1 (W x D x H) in mm	150 x 110 x 42	207 x 139 x 42	250 x 200 x 42
Weight	250 g	300 g	500 g
Operating temperature	- 25 up to 55°C	- 25 up to 55°C	- 25 up to 55°C
Installation advice	for interior use	for interior use	for interior use
Scope of supply	WhisperTouch panel, RS232 connection for WPC-RS232 -i, RJ 45 converter / cable for WhisperPower generator, installation manual		
Compatible:	Yachtcontrol, Empirbus, NMEA 2000, Kabola, Webasto		

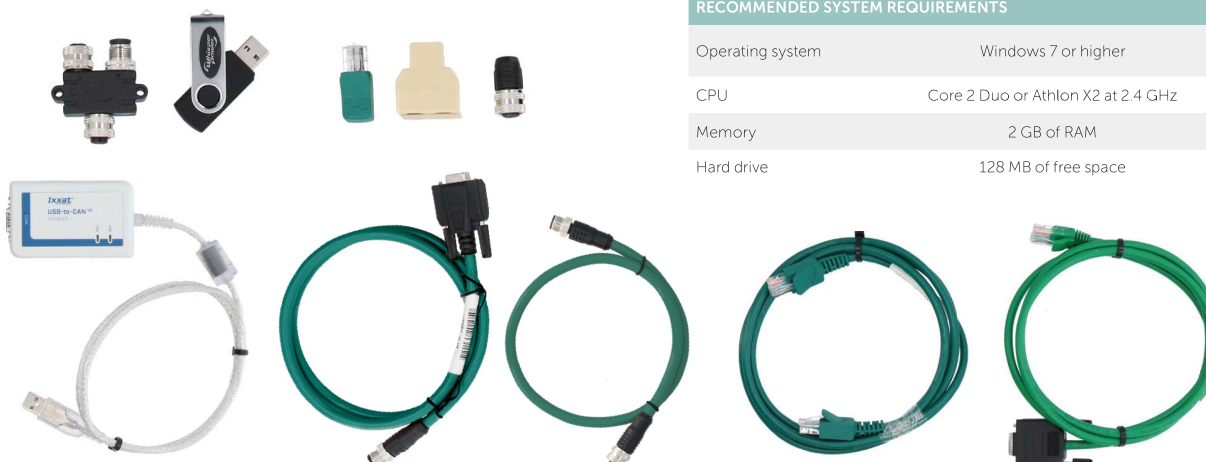
*1) Outside dimensions, installation depth

Dimensions and installation information



WhisperConnect Tool

The WhisperConnect Tool is one tool for monitoring, controlling and configuring your WhisperPower energy system. The WhisperConnect Tool uses the WhisperConnect CAN-bus to communicate to all WhisperPower equipment with WhisperConnect capabilities in a system. Simply connect the WhisperConnect CAN-bus to the computer using the supplied CAN to USB converter and you are ready to go. Due to the easy to use user interface you can have your system completely configured to your needs in no time at all.



WHISPERCONNECT TOOL

Article Number	40290370
DIMENSIONS & WEIGHT	
Weight	500 g
Dimensions (W x D x H)	230 x 320 x 70 mm
Storage temperature	-40 up to 80°C Relative humidity in operation/storage up to 95% non condensing
SPECIFICATIONS	
Communication	WhisperConnect
Connection to computer	USB 2.0 type A
Connection to system	RJ45 or Micro C
RECOMMENDED SYSTEM REQUIREMENTS	
Operating system	Windows 7 or higher
CPU	Core 2 Duo or Athlon X2 at 2.4 GHz
Memory	2 GB of RAM
Hard drive	128 MB of free space

WhisperCare 1.5

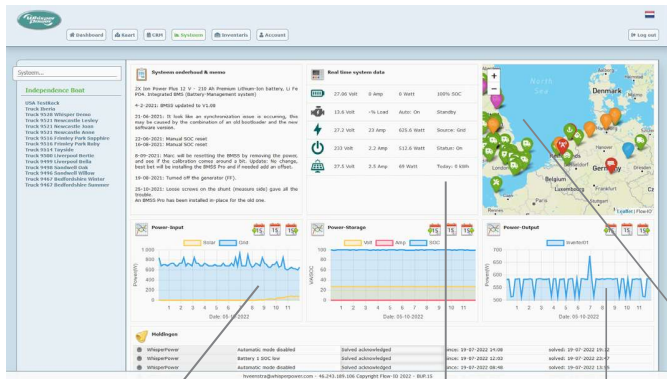
Functional telematics

A key feature of WhisperCare 1.5 is the detection of the location of a vehicle or a vessel with the signalling of any malfunctions, visible on the computer screens or cell phone screen of a fleet manager, service technician or even the owner.

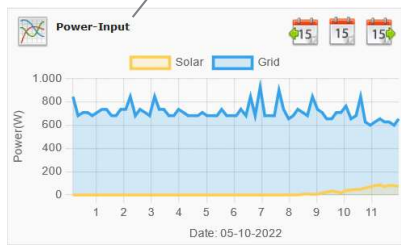
Including the ability obtain detailed information, from the WhisperPower generator, Lithium battery, Sine Wave Inverter and Battery Charger. This includes internal temperature measuring of the equipment, time - to - go service intervals, state of charge of the battery - with sms alarms.



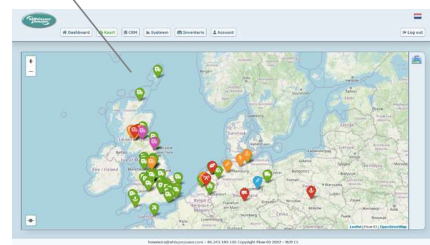
System maintenance and memo



Historical Trend Data



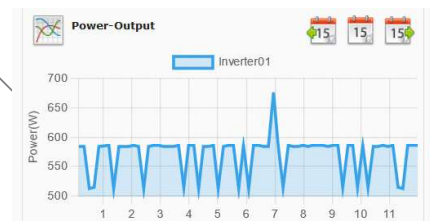
Power-Input



Map

	27.06 Volt	0 Amp	0 Watt	100% SOC
	13.6 Volt	-% Load	Auto: On	Standby
	27.2 Volt	23 Amp	625.6 Watt	Source: Grid
	233 Volt	2.2 Amp	512.6 Watt	Status: On

System Data



Power-Output



Accessories

WHISPERCARE 1.5 ROUTER

Article Number	Description
60116059	WP-DC WhisperCare LTE Cat 4 ROUTER 4G with GNSS – Dual SIM *)
	*) Router will be delivered without SIM card. SIM card to be bought and paid by the end user from local telecom provider. Additional charge for hosting the local WP server will be charged separately for remote monitoring and data logging. Price on request.



ART. NR. 40290350

ART. NR. 40290360

ART. NR. 40290257

ART. NR. 40290258

ART. NR. 40290259

WhisperConnect terminator

WhisperConnect Splitter

Power Plus CAN-bus splitter

WP Power Plus CAN-bus terminator female

WP Power Plus CAN-bus terminator male

ART. NR.	WHISPERCONNECT PATCH CABLE
40290351	WhisperConnect Patch Cable 0.5 metre
40290352	WhisperConnect Patch Cable 1.5 metre
40290353	WhisperConnect Patch Cable 3 metre
40290354	WhisperConnect Patch Cable 6 metre
40290355	WhisperConnect Patch Cable 10 metre
40290356	WhisperConnect Patch Cable 15 metre
40290357	WhisperConnect Patch Cable 25 metre
40290358	WhisperConnect Patch Cable 100 metre
40290365	WhisperConnect DIY Patch Cable (do it yourself)



Control and monitoring of the WhisperPower generator

- Start/stop including ignition period
- Set automatic start - based on DC voltage
- Indication of starter battery condition
- Current (A), voltage (VAC), frequency (Hz) read outs
- Time to service indication
- Logged running hours

Remote control and monitoring: inverter / battery charger WPC & Battery

- Switch the entire inverter system ON-OFF
- Charger-only - the inverter is not activated if land power is switched off or cuts out
- Advanced battery monitoring
- Set land power amperage
- Inverter status indicator
- Battery charger status indicator
- AC power input voltage
- AC power output voltage

Brand connections:



WhisperCare 2.0

Next generation cloud-based

With its in-house developed WhisperCare 2.0, WhisperPower has taken the next step towards secure, robust, easily accessible and cost-effective remote monitoring. Security and compliance are important to WhisperPower, the highest standards have been incorporated in the design.

Implementation of the new software in WhisperPower's systems is ongoing, linking to other systems such as navigation systems are easily achieved. The range of OctoControl interfacing devices makes connectivity at various system levels (local, cloud-based) easy.



Portal

Developed and maintained for end-users, fleet managers, dealers and service engineers alike.

Using WhisperCare leads to:

- Increased system efficiency
- Saves costs on cost of operation
- Pro-active support

Benefits of using the WhisperCare cloud portal

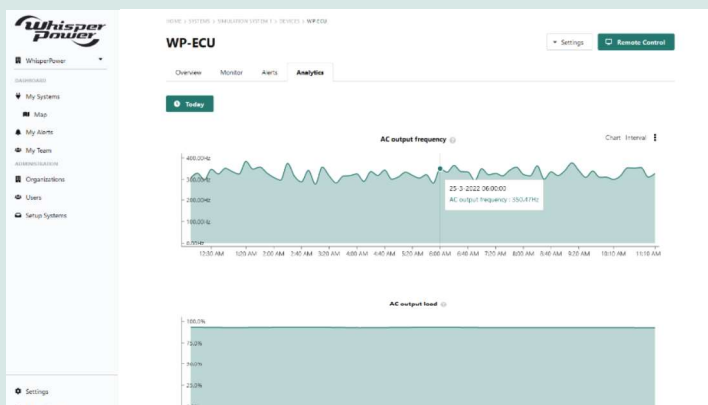
- Full control of your system from everywhere
- Uptime improvement using connectivity
- Performance improvement owed to data analysis
- Cost reduction through pro-active maintenance and support

Watch the status of all your systems in a single overview, on a map or in a summarized list. View a summary of advanced alerts, alarms and notifications from all your WhisperPower systems.

NAME	STATUS	CONNECTIVITY	ACTIVE ALERTS	ACTIONS
Fish Stalker	Online	Online	-	[Action]
NO Regrets	Online	Online	1 active alerts	[Action]
Just About Perfect	Online	Online	-	[Action]
Beach Nut	Offline	Offline	-	[Action]
Main Wives	Offline	Offline	-	[Action]
Sea Serpent	Offline	Offline	-	[Action]
Rusty Reel	Offline	Offline	-	[Action]
Flying Cloud	Offline	Offline	-	[Action]

Real time monitoring

Detailed real time information, both on system level and on single device level.



Historical trend data

Historical analytic gives insight in the usage and status of your WhisperPower system over a longer time. Full data can be viewed in graphs up to 3 years ago. Useful for diagnostics and pro-active maintenance.

WhisperCare 2.0

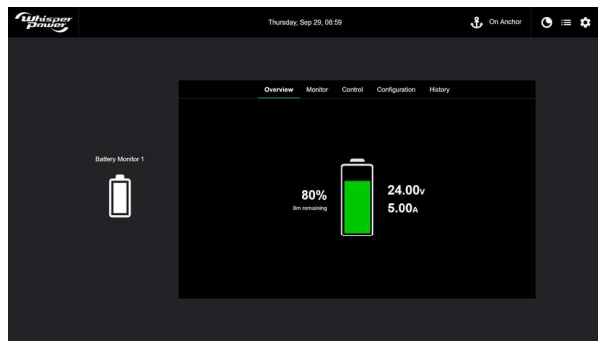
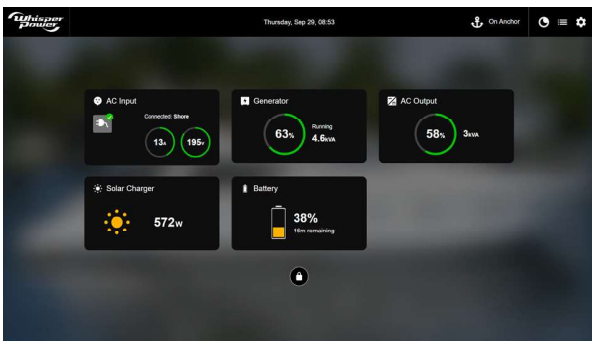
OctoControl User Interface

All information from your WhisperPower energy system (or OctoPower system) centralized and presented in an easy to read format. The OctoControl modules collect real-time information from your WhisperPower system, process it and display it on your WhisperPower Touch monitor, a third party MFD or in the WhisperCare cloud interface.

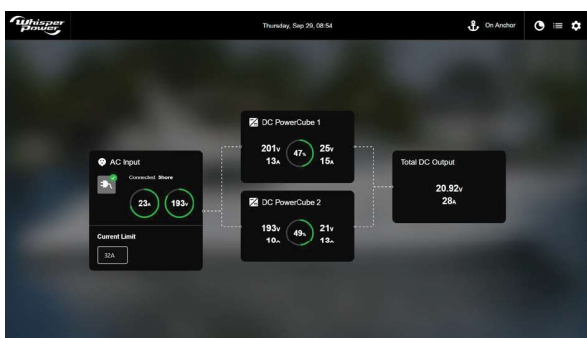
Smart features:

- Generator automatic run request
- Day and night profile
- Advanced alerts, alarms and notifications

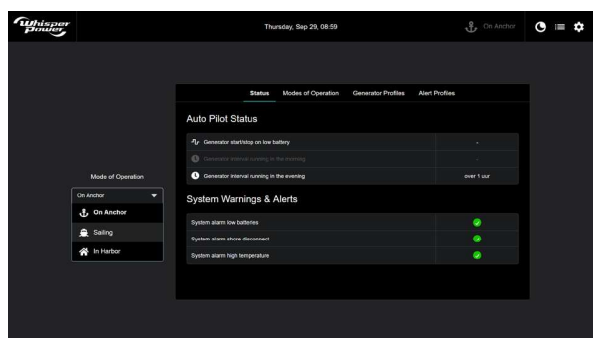
Thanks to the smart WhisperCare software, seamless integration to third parties like Garmin, Raymarine and Simrad is possible to control the complete WhisperPower system from your navigation screen, and other Multi functional displays.



All system information presented in an easy to read format Full details and control of all WhisperPower equipment



Summarized input and output power data combined from all chargers in a system



Smart features allows the use of automatic generator requests, different user profiles

WhisperCare 2.0

OctoControl Interfaces

OctoControl Gateway

Brings your WhisperPower system online in the cloud. Easy to install and use. It comes with built-in 4G connection and integrated E-sim, including three year data subscription as a standard.

Monitor systems up to three devices

Direct integration to the cloud

Connections

Power supply

GSM antenna

Built-in 4G connection, no external router equipment needed

Readout from online WhisperCare cloud portal

Readout on phone/tablet from anywhere

WhisperConnect connection to your WhisperPower system

OctoControl Basic

Ideal for integrating your WhisperPower system into a third party MFD, like Garmin, Raymarine, Simrad, B&G.

Connections

Power supply

Ethernet connection for MFD integration

Readout on third party MFD touch panels

Smart system control modules, like auto start

No WhisperCare cloud integration

WhisperConnect connection to your WhisperPower system

OctoControl Series

	GATEWAY	BASIC	PRO
Article Number	60208010	60208015	60208025
SPECIFICATIONS			
Input voltage	8-32 VDC	8-32 VDC	8-32 VDC
Power consumption	< 100 mA at 12 VDC *	< 500 mA at 12 VDC *	< 500 mA at 12 VDC
Operation temperature	-20°C to +40°C	-20°C to +40°C	-20°C to +40°C
Storage temperature	-40 up to 80 °C, Relative humidity in operation/ storage up to 95% non-condensing		
TECHNICAL SPECIFICATIONS			
System communication	WhisperConnect only	WhisperConnect only	WhisperConnect***
System support	Up to 3 WhisperConnect devices	Complete WhisperConnect systems	Complete WhisperPower systems
Cloud integration	Yes	No	Yes
Cloud connection	Built-in 4G	N.A.	Built-in 4G **, Ethernet
OctoView support	No	No	Yes
OctoView connection	N.A.	N.A.	HDMI, USB
MFD brands supported	N.A.	Raymarine, Garmin, Simrad, B&G, Furuno**	Raymarine, Garmin, Simrad, B&G, Furuno**
MFD connection	N.A.	Ethernet	Ethernet
TECHNICAL SPECIFICATIONS			
Dimensions (W x D x H) in mm	107 x 40 x 140 *	167 x 40 x 140 *	267 x 40 x 145
Weight (kg)	< 0.5 *	< 0.5 *	< 0.5
Installation advice	For interior use	For interior use	For interior use

*Preliminary specifications, may change without notice **Prepared *** WhisperConnect, WPC-Bus, CanOpen, NMEA 2000



OctoControl Pro

Best of both worlds. Combine monitoring from a local WhisperPower Touch monitor, integrating in third party MFDs and connection to the WhisperCare cloud in a single module. Optionally with built-in 4G connection, so no external router equipment are needed.



Excellent to use with complex OctoPower systems

Smart system control modules, like auto start

Readout on third party MFD touch panels

WhisperCare cloud integration

Readout from online WhisperCare cloud portal

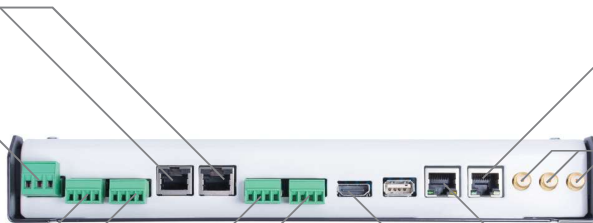
Connections

WhisperConnect connection to your WhisperPower system

Power supply

CAN-bus, configurable for third party devices

Dual RS485 communication, configurable to use for DDC bus



Ethernet connection for MFD integration

GSM/GPS antenna

Ethernet for cloud integration

HDMI output for use with WhisperPower Touch monitor

OctoControl Pro System



For fleet managers, end users with complete systems and MFDs

- Complete, OctoPower systems
- Smart system control modules, like auto start
- Readout on third party MFD touch panels
- WhisperCare cloud integration
- Readout from online WhisperCare cloud portal



Battery Monitor

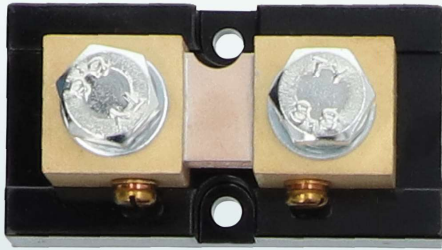
BMSS PRO

The BMSS Battery Monitor Smart Shunt completes your WhisperPower energy supply system by providing full details about the state of your battery or battery bank. All information is communicated via WhisperConnect, thereby integrating this product into a range of battery chargers, generator sets and inverters from WhisperPower, to be read out by the WhisperTouch control panels.

The BMSS Pro is a professional measurement device which has to be installed close to the battery. In combination with one of the WhisperTouch panels, this is the most advanced battery monitor you can find. The BMSS controls the key parameters of the batteries: automatic charge devices can be programmed such as a battery charger, Combi and a diesel generator. The BMSS Pro matches perfectly with all other interface devices and makes the system rock solid.

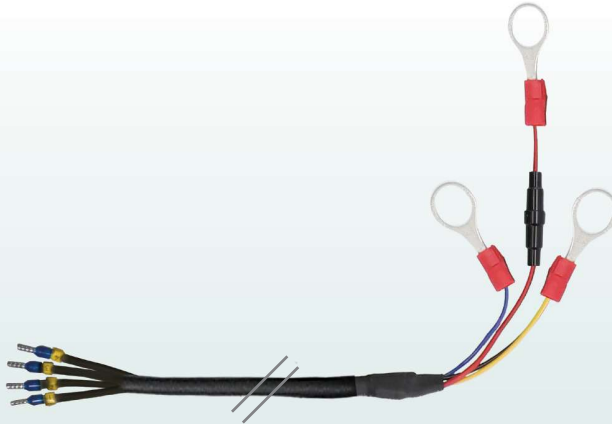
WHISPERCONNECT TERMINATOR (NOT INCLUDED)	WHISPERTOUCH PANEL (NOT INCLUDED)	TEMPERATURE SENSOR + CABLE 1.5 m (INCLUDED)
Art. Nr. 40290350	Art. Nr. 40280105 5 inch Art. Nr. 40280101 7 inch Art. Nr. 40280102 10 inch Art. Nr. 40280103 7 inch NMEA 2000	Art. Nr. 60201201

Accessories included



ART. NR. 40290320

Shunt 1200 A / 50 mVDC



ART. NR. 40290326

Shunt Connection Cable

BMSS PRO

Article Number 40290323

SPECIFICATIONS

Power supply voltage	6-60 VDC
Current draw (standby)	<9 mA at 12 VDC
Operating temperature	-20 up to +60°C
Voltage measurement range	6 - 60 VDC
Battery capacity	20 - 9999 Ah
Shunt compatibility	50 - 1000 A, 50 - 60 mVDC
Voltage resolution	± 0.001 VDC
Current resolution	± 0.1 A
Amp hour resolution	± 0.1 Ah
Time remaining resolution	0 - 480 hours, ± 1 minute
Temperature resolution	± 1°C
Voltage measurement accuracy	0.3 %
Current measurement accuracy	0.4 %
Temperature accuracy	± 2°C
State of charge accuracy	± 1% of battery capacity
Local user interface	Status LED, ROM
External communication	WhisperConnect (CAN-bus) WP temperature sensor - USB
Multipurpose contact	2 nc/no potential free contacts
Operation temperature	-20 up to 40°C

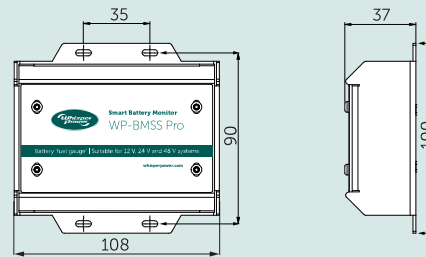
ALARM CONTACTS

Voltage	24 VDC
Current	1 A
Measurement shunt included	1200 A, 50 mV

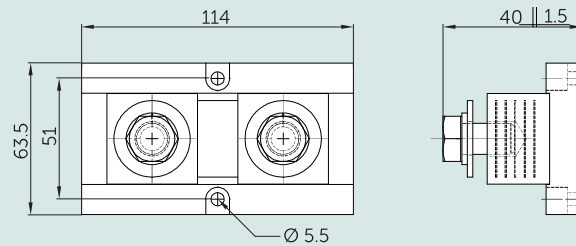
WEIGHT AND DIMENSIONS

Weight	< 500 g
Dimensions (W x D x H) in mm	90 x 50 x 75
Storage temperature	-40 up to +80°C Relative humidity in operation/ storage up to 95% non-condensing

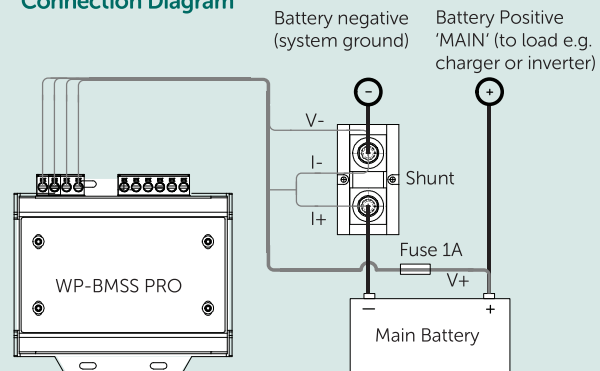
Drawing BMSS Pro



Drawing Smart Shunt Pro



Connection Diagram



Smart Battery monitoring - the traditional way

A look inside the battery

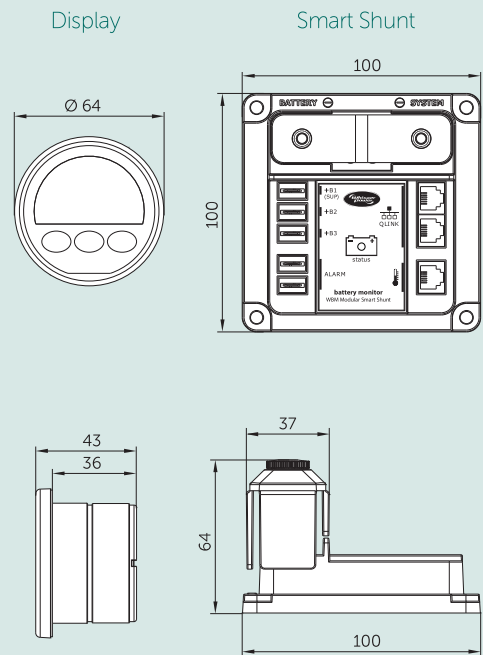
When putting together a DC installation, there is more to take in to consideration than just the correct choice of battery and associated charging systems. All sorts of other items can have something to do with the battery or are connected to it and can significantly impact the end result.



WBM-MODULAR SMART SHUNT *)

Article Number	40290313
TECHNICAL SPECIFICATIONS	
Supply voltage range	7 - 70 VDC
Supply current **) at 24 VDC	6 mA
at 12 VDC	10 mA
Input Voltage range (auxiliary battery)	7 - 70 VDC
Input Voltage range (main battery)	1 - 70 VDC
Input current range ampere ***)	-600 up to 600 A
Battery capacity (min. - max.)	10 - 10.000 Ah
Operating temperature	-20 up to 50°C
Readout accuracy: voltage	± 0.01 VDC
current	± 0.1 A
battery capacity	± 0.1 Ah (0 - 10.000 Ah)
battery capacity	± 1 Ah (200 - 10.000 Ah)
start of charge (0 - 10 %)	± 1 %
time remaining (0 - 24 h)	± 1 minute
time remaining (24 - 240 h)	± 1 hour
temperature (-20 up to 50°C) ****)	± 0.5°C
Voltage measurement accuracy	± 0.3 %
Current measurement accuracy	± 1 A (0.600 A)
Housing material	ABS
Colour	RAL 7021 black grey
Dimensions: diameter front panel / cylinder	ø 64 mm / ø 51.5 mm
Weight	Display: 70 g Shunt: 260 g
Shunt Dimensions (W x D x H) in mm	100 x 100 x 64
International Protection rating	IP20 (front panel IP65)

Dimensions WBM Modular Smart Shunt



*) Shunt to meter cable included

**) Measured with backlighting and alarm relay switched off

***) Subject to selected shunt. With 500 A / 50 mV shunt (350 A continuous delivered as standard the range is -600 up to 600 A

****) Only available if optional temperature sensor (Art. Nr. 40290304) is connected

WBM Series



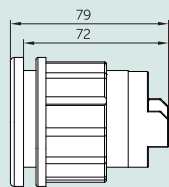
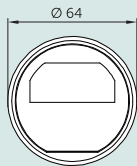
WBM-BASIC

WBM-PRO

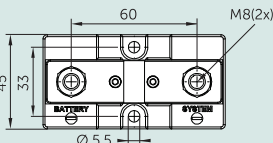
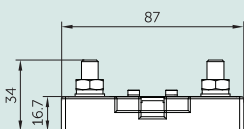
Article Number	40290310	40290311
TECHNICAL SPECIFICATIONS		
Supply voltage range	9 - 35 VDC	9 - 35 VDC
Supply current *)	at 24 VDC	7 mA
	at 12 VDC	9 mA
Input Voltage range (auxiliary battery)	2 - 35 VDC	2 - 35 VDC
Input Voltage range (main battery)	0 - 35 VDC	0 - 35 VDC
Input current range ampere **)	-999 up to 999 A	-999 up to 999 A
Battery capacity (min. - max.)	20 - 999 Ah	20 - 999 Ah
Operating temperature	-20 up to 50°C	-20 up to 50°C
Readout accuracy:	voltage	± 0.1 VDC (0 - 35 VDC)
	current	± 0.1 A (0 - 100 A)
current		± 1 A (100 - 999 A)
	battery capacity	± 0.1 Ah (0 - 100 Ah)
battery capacity	± 1 Ah (100 - 999 Ah)	± 1 Ah (200 - 999 Ah)
start of charge (0 - 10 %)	± 0.1 %	± 0.1 %
time remaining (0 - 24 h)	N/A	± 1 minute
time remaining (24 - 240 h)	N/A	± 1 hour
temperature (-20 up to 50°C) ***)	N/A	± 0.5°C
Voltage measurement accuracy	± 0.3 %	± 0.3 %
Current measurement accuracy	± 0.4 %	± 0.4 %
Housing material	ABS	ABS
Colour	RAL 7021 black grey	RAL 7021 black grey
Dimensions: diameter front panel / cylinder	ø 64 mm / ø 52 mm	ø 64 mm / ø 52 mm
Total depth / weight	79 mm / 95 g	79 mm / 95 g
Shunt Dimensions (W x D x H) in mm	87 x 45 x 34	87 x 45 x 34
Weight (Shunt + Meter)	145 g	145 g
International Protection rating	IP20 (front panel IP65)	IP20 (front panel IP65)

Dimensions WBM Basic/Pro

Display



Shunt



*) Measured with backlighting and alarm relay switched off

**) Subject to selected shunt. With 500 A / 50 mV shunt (350 A continuous) delivered as standard the range is -600 up to 600 A

***) Only available if optional temperature sensor (Art. Nr. 40290304) is connected

Battery usage indicator - knowledge is power

The WBM is a universal battery monitor that displays the status of the battery with very high precision. Via the display, the following information is brought up:

- The main battery voltage (VDC)
- The power consumption indicated in ampere-hours (Ah)
- Power consumption in Amps (A)
- Charge current of battery charger, Combi, solar panels, windmills, etc. (A)
- Battery capacity in %
- Remaining battery capacity and "time remaining" in minutes and hours (Pro Series) The WBM provides a look 'inside' the battery and is essential for preserving long battery life

Remote communication

The WBM, fitted with the WPC-RS232-i option, can be used to remotely monitor power systems using a GSM or an internet connection.

Three versions

The WBM Basic version is identical to the PRO version, only without the "time remaining" indicator in hours and minutes. The PRO-HV is suitable for DC systems up to 70 VDC.

Automatic start function

The WBM can also be used as a means of automatically starting a DC or AC generator, based on the battery voltage or battery condition. This is achieved via WPC-RS232-i communication (order WPC-RS232-i option) Please note that your generator must be suitable for this function. WhisperPower generators are equipped with an automatic start / stop adjustment kit as standard.



Art. Nr. 40290304

WBM Temperature Sensor Kit - 10 metre

WPC-BSI-500

Battery Status Interface

One of the most important indicators for a safe and effective operating of an energy system with batteries is their state of charge. The BSI offers, for WhisperPower Center, a highly precise measuring and an extremely efficient algorithm that calculates the state of charge in the most accurate way.

**The complete package**

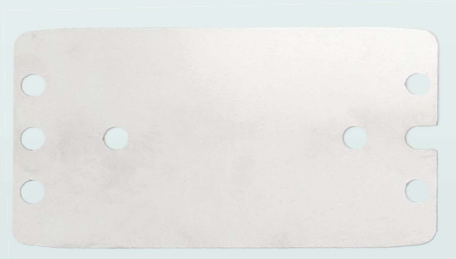
Battery Status Interface



Shunt 500 | 50 *)



Connection cable 5 metre



Fixing plate

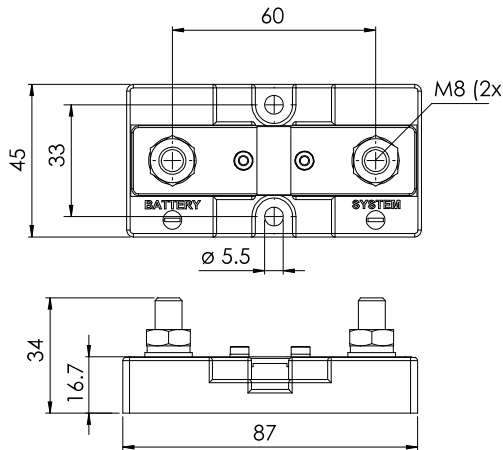
*) Shunt 1200 | 50 optional

By adding the WPC data logger (see page 138), provides the data logging, the graphical display of the state of charge history and the settings. Values of the BSI can be used in the programming of the WPC Series. Values can be displayed like for instance:

- State of charge
- Voltage
- Current
- Time to go
- Throughput energy
- Battery temperature

SHUNT

Article Number	Item
60201087	Standard included Shunt 500 A / 50 mVDC
60201088	Optional Shunt 1200 A / 50 mVDC



WP-BSI-500

Article Number	60201082
----------------	----------

SPECIFICATIONS

Supply voltage range	7.85 VDC
Supply current	9 mA at 12 VDC 5 mA at 24 VDC 3 mA at 48 VDC
Input voltage range	7.85 VDC
Shunt measurement input range	± 195 mV
RMS continuous current at 25 °C	± 500 A
Maximum measurable peak current	± 1950 A
Voltage measurement accuracy	0.3 %
Current measurement accuracy	0.5 %
Battery capacity	20 - 20000 Ah

READOUT RESOLUTION

Voltage	± 0.01 VDC
Current (A) and capacity (Ah)	± 0.01 VDC (1 to 10) ± 0.1 VDC (10 to 100) ± 1 VDC (100 to 9999)
State of charge	± 0.1 %
Temperature	± 0.1°C
Time to go	± 1 second

READOUT INFORMATION

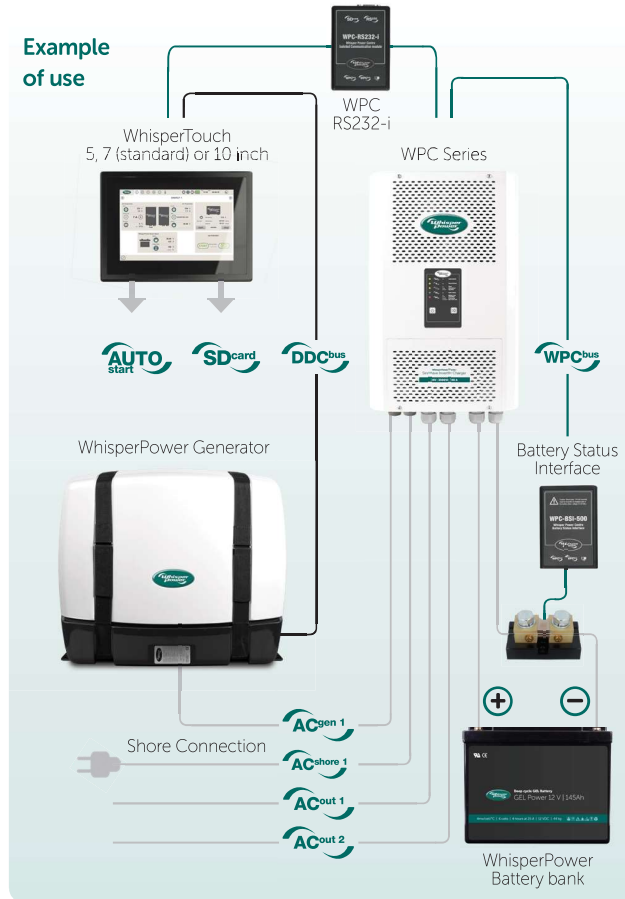
Battery voltage
Current, state of charge
Power used
Time to go
Battery temperature
Relative capacity
Historical Ah data
Total Kah charged
Total Kah discharged
Total time: Charge counting in Ah and hr.

GENERAL

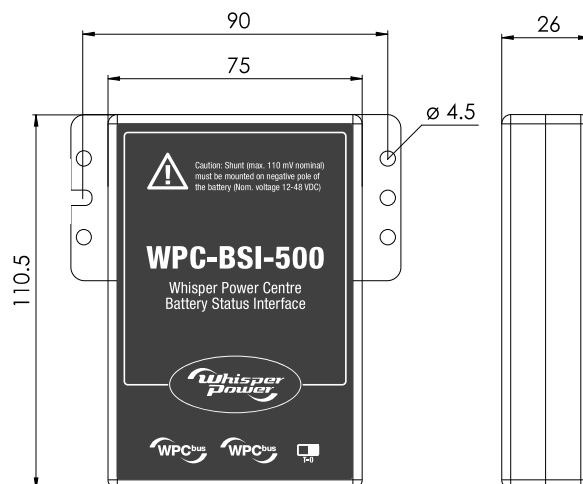
Operation temperature	-20 up to 40°C
Dimensions (W x D x H) in mm	75 x 26 x 110.5
Weight	900 g
Protection degree	IP20

Conformity LVD 2006/95/EC, EMC 2004/108/EC, RoHS 2002/95/ECEN 60950.2005, EN 61000-6-2.2005, EN 61000-6-3.2007

Example of use



WPC-BSI-500



WPC-RS232-i

WhisperPower Center Communication Interface

The WPC is an allround sine wave inverter/charger, designed to operate as the heart of a complete energy system, equipped with or without generator.



The WPC can operate as an offgrid inverter-only, or inverter/ battery charger combined, features a build - in "traffic" system between various AC sources and produces additional output power when connected in parallel to AC mains/ land power and / or generator power. The WPC product is premium system component, based on low-frequency, toroidal transformer technology with heavy duty, high efficient mosfets taking care of an accurate alternating current (AC) current. WhisperPower can configure the WPC's by stacking the units in parallel up to 72 kVA output power, in single or three phase.

System link

The WPC is fitted with an RS232 analogue communication port which can be used to link the WPC to a complete WhisperPower system and the WhisperTouch panel (and WhisperCare) in particular. In this chapter all relevant components are described which are required to set - up the WPC for a proper system integration. The main accessory is the WPC - RS232 interface, which enables to read out all essential information from the WPC and change, if needed, change parameters to adapt the configuration. This device is enabling data transmission to GSM modems, computers and RS232 bridges to TCP/IP. The integrated SD card stores all important data related to the entire power systems including the process of battery charging, battery usage, load connected and the behavior, charge cycles etc.

The complete package

Article Number: 60201084



WPC-RS232-i



Connection cable 2 metre



Fixing plate



RS232 cable



DIN Rail Holder

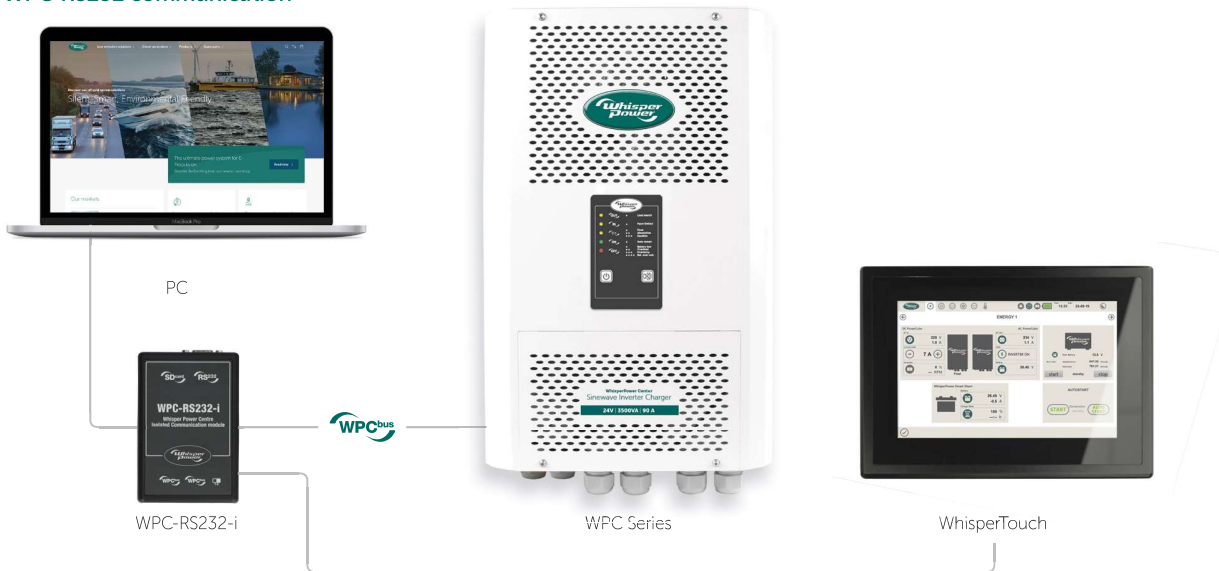


Micro SD card

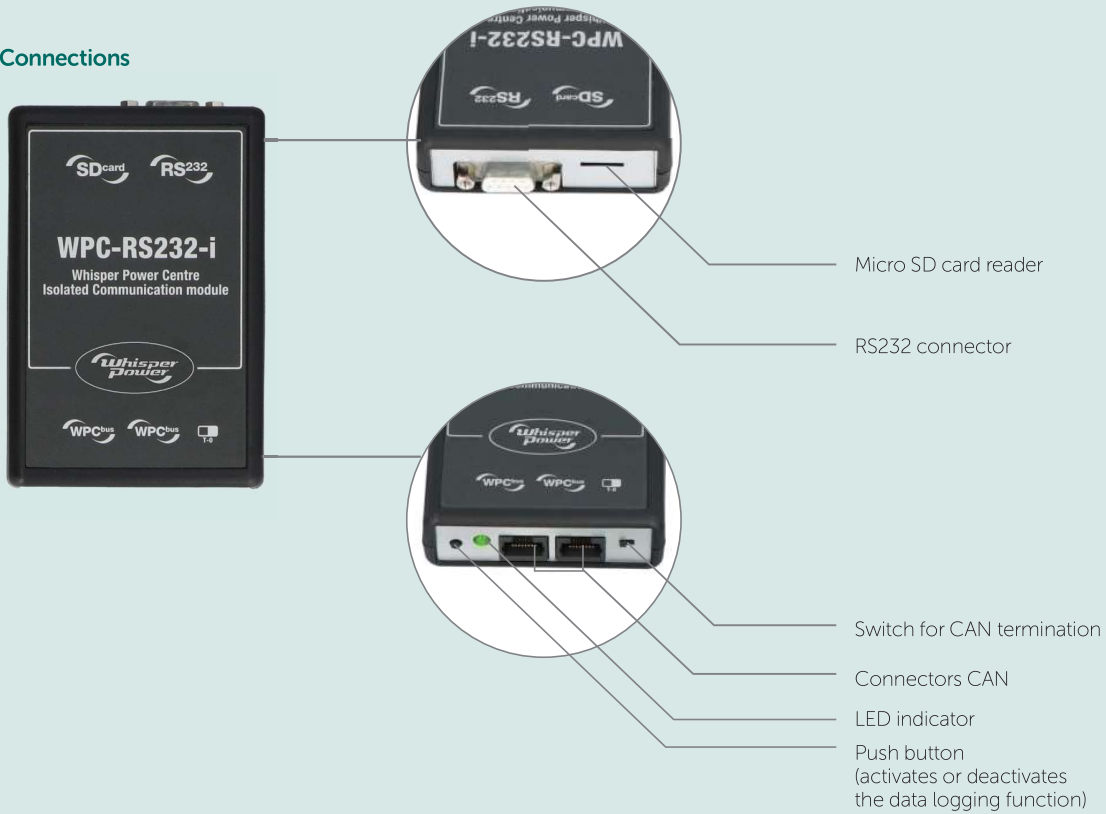


Mounting Bolts

WPC-RS232 communication



Connections



Dimensions

